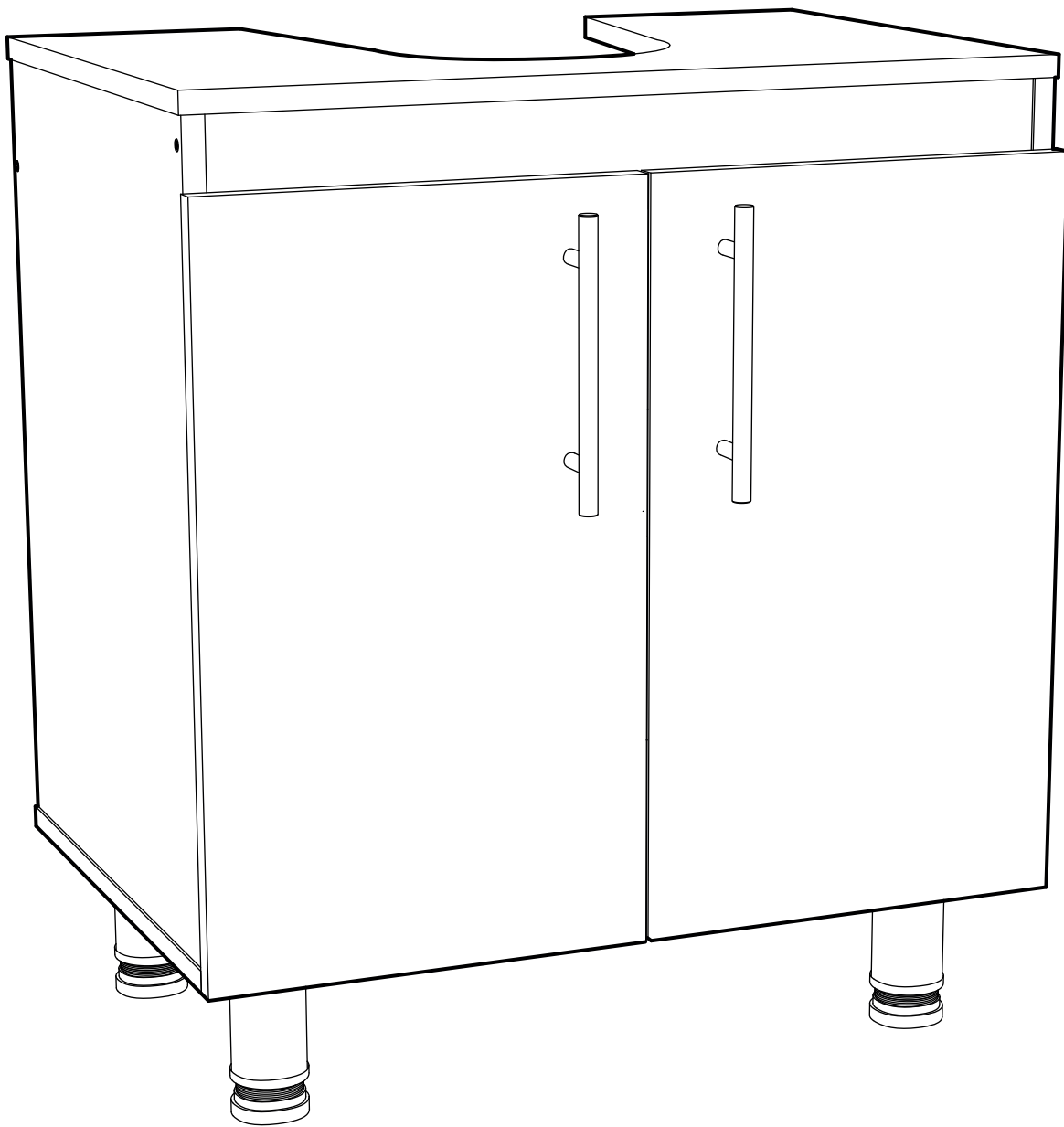


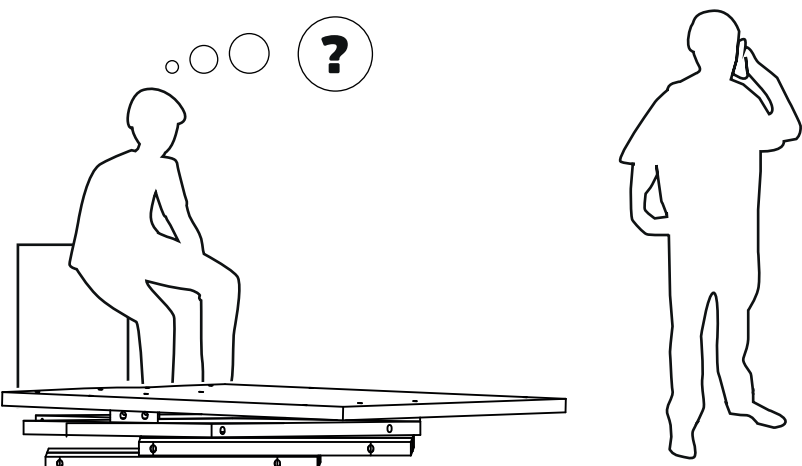
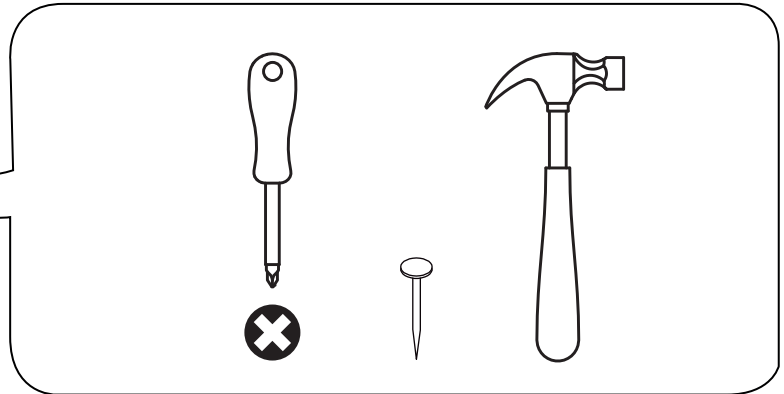
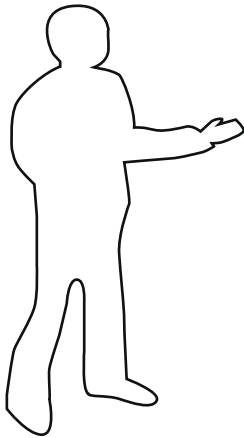
# VANITORIO

## 2 PUERTAS




# HERRAMIENTAS

A USAR • NO INCLUIDAS



?



**SERVICIO AL CLIENTE**  
**800 74 00 00**

The illustration shows a person sitting on a chair, looking thoughtful with three circles above their head and a question mark in a circle. To the right, another person stands talking on a mobile phone. Below the person on the phone is the CIC logo, which consists of the letters 'CIC' in a bold, serif font, with 'SABER VIVIR' in a smaller font underneath, and 'Desde 1972' in an even smaller font at the bottom. To the right of the logo is the text 'SERVICIO AL CLIENTE' and '800 74 00 00' in large, bold, sans-serif font.

## INDICA TAPACANTO

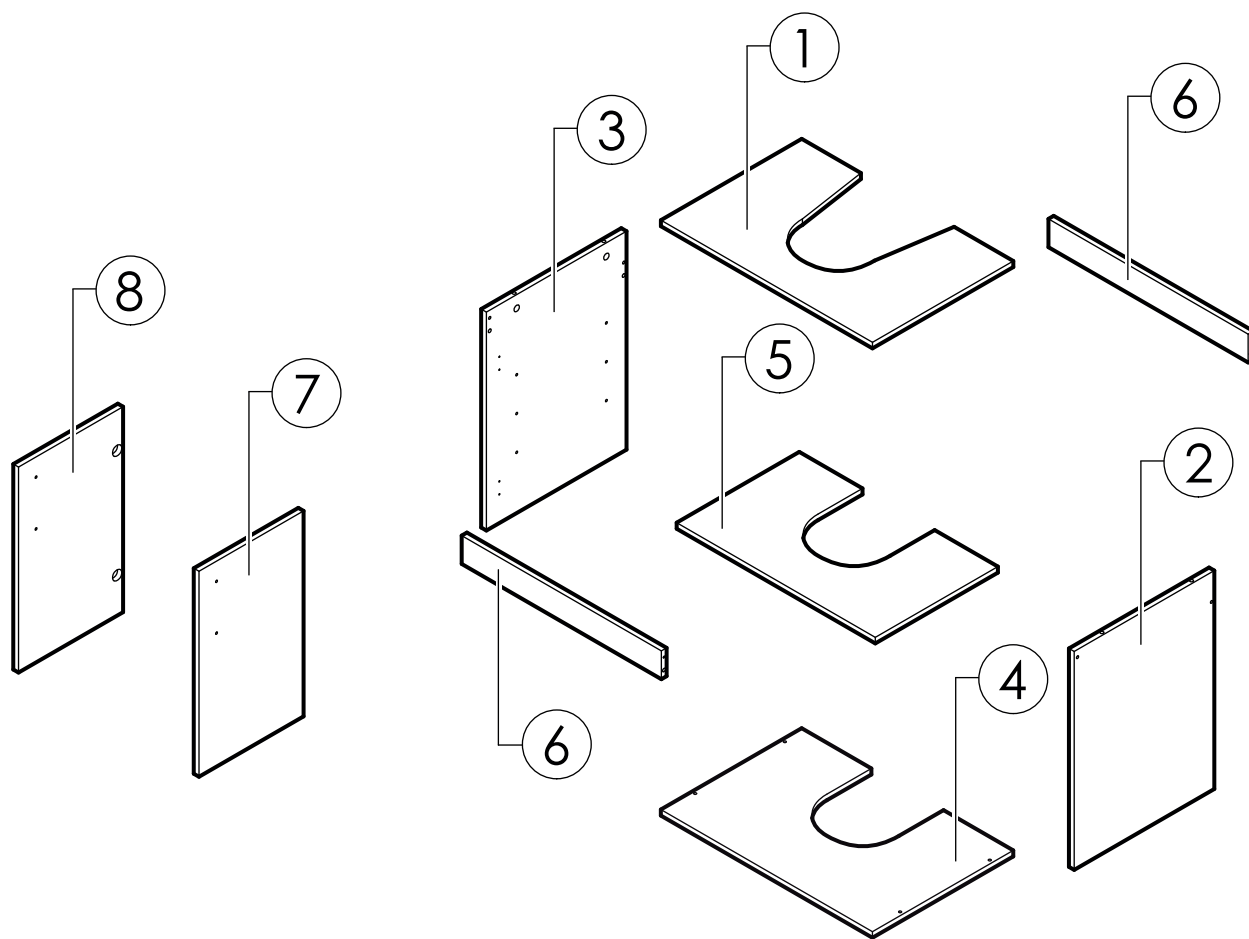


Revise que todos los **herrajes** contenidos en la(s) bolsa(s) coincidan con el listado de **herrajes** indicado en la siguientes páginas.

Retire o limpie los números de las piezas una vez que el mueble esté correctamente armado (los números impresos los puede borrar con Diluyente).

Conserve el código de trazabilidad (pegado en el exterior de la caja) hasta que el mueble se haya armado correctamente.

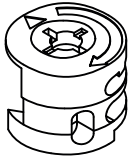
# PIEZAS Y COMPONENTES



1	CUBIERTA	x1
2	COSTADO DERECHO	x1
3	COSTADO IZQUIERDO	x1
4	FONDO	x1

5	REPISA MOVIL	x1
6	BARRA	x2
7	PUERTA DERECHA	x1
8	PUERTA IZQUIERDA	x1

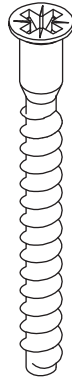
# HERRAJES



x4



x4



M x8



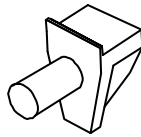
S x16



T x4



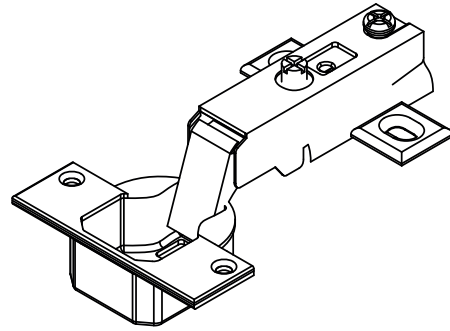
x4



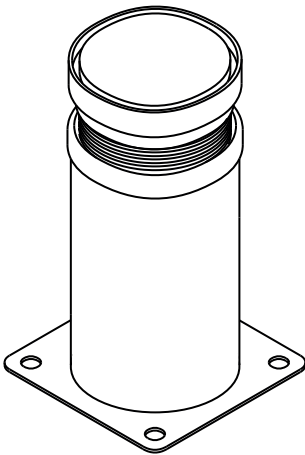
x4



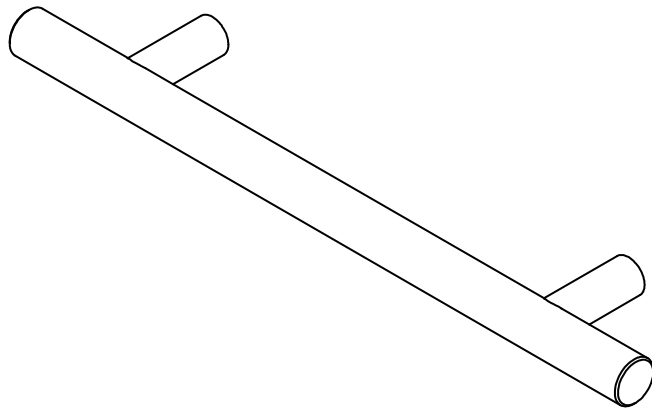
x4



x4

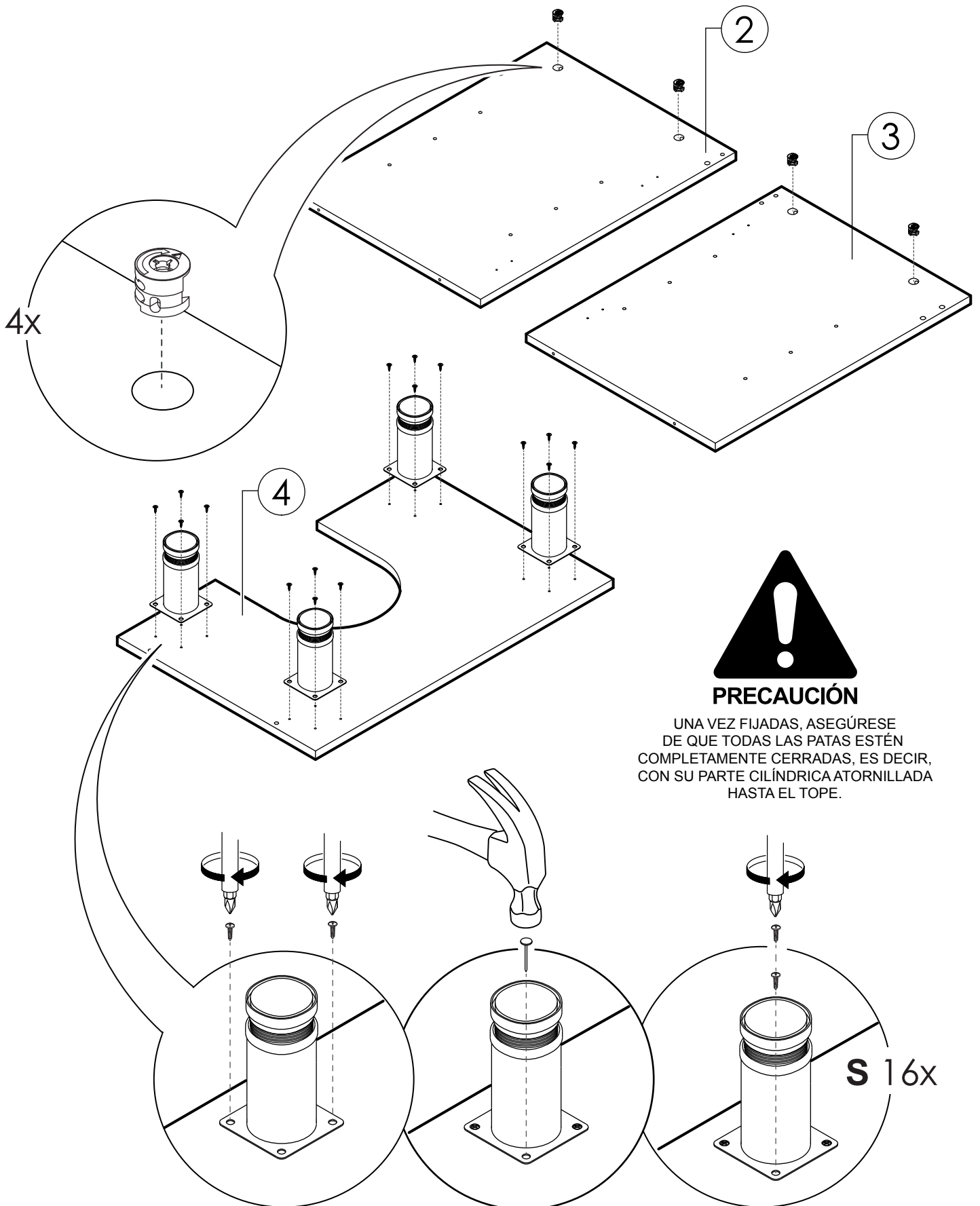


x4

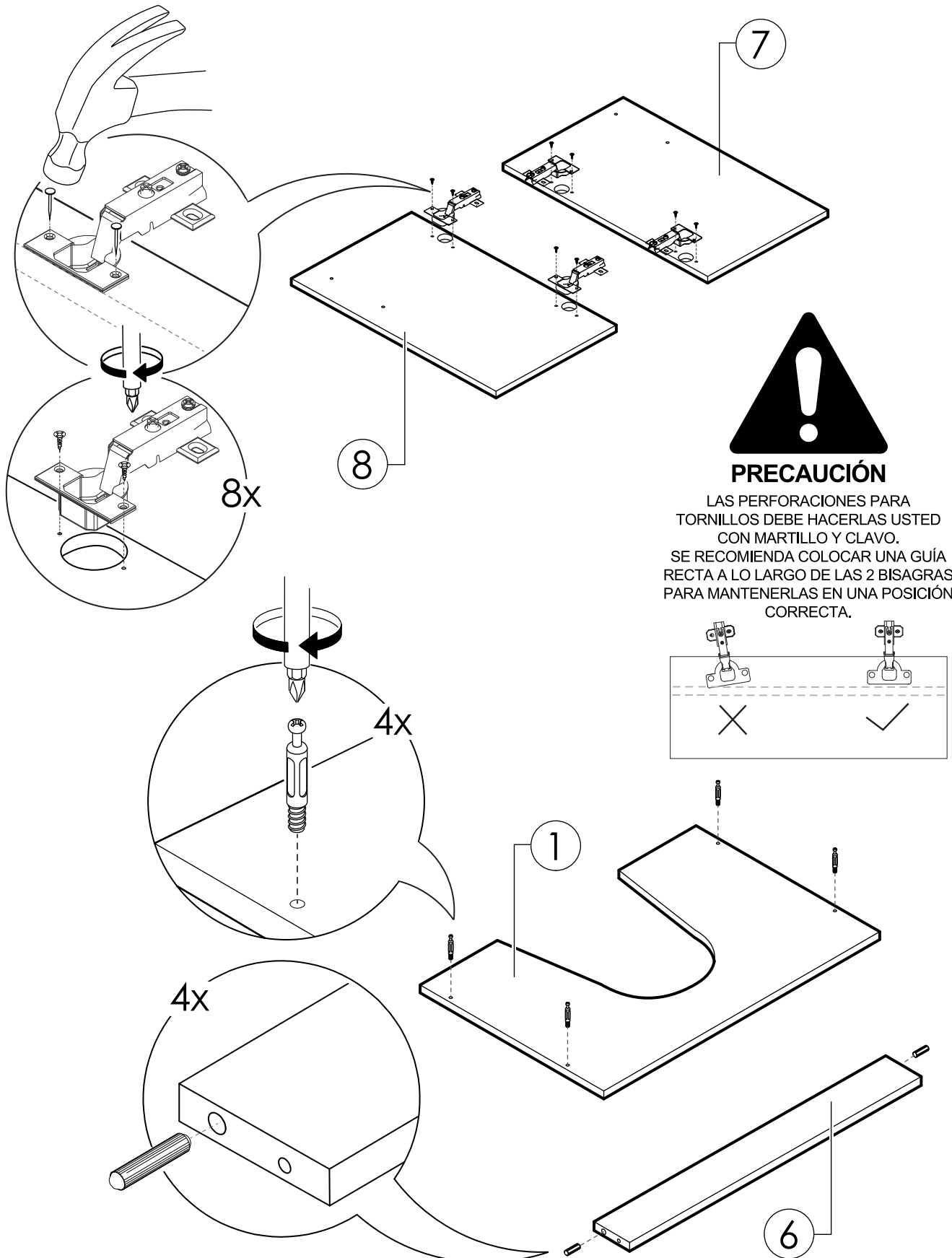


x2

# PREPARACIÓN DE PIEZAS

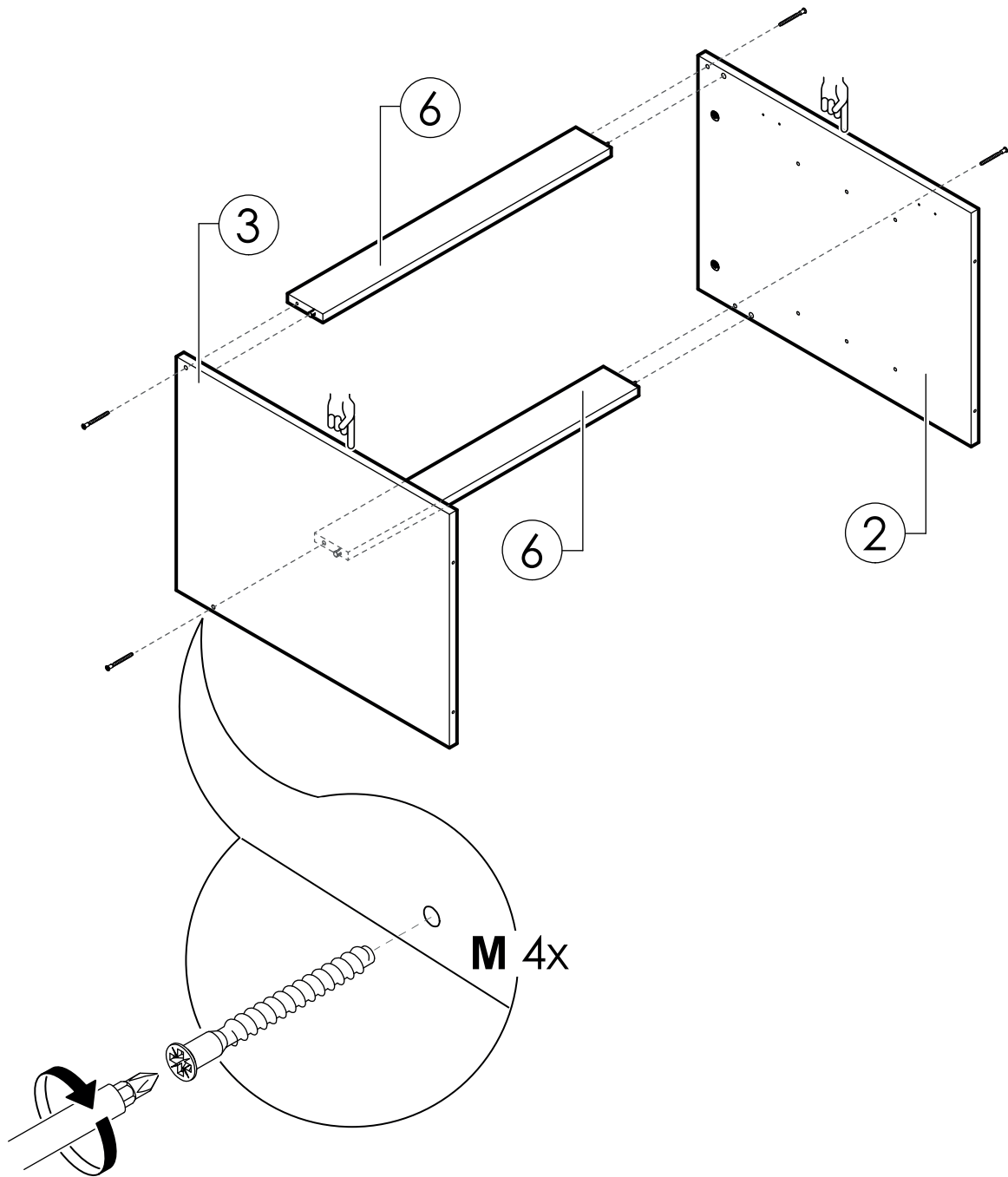


# PREPARACIÓN DE PIEZAS

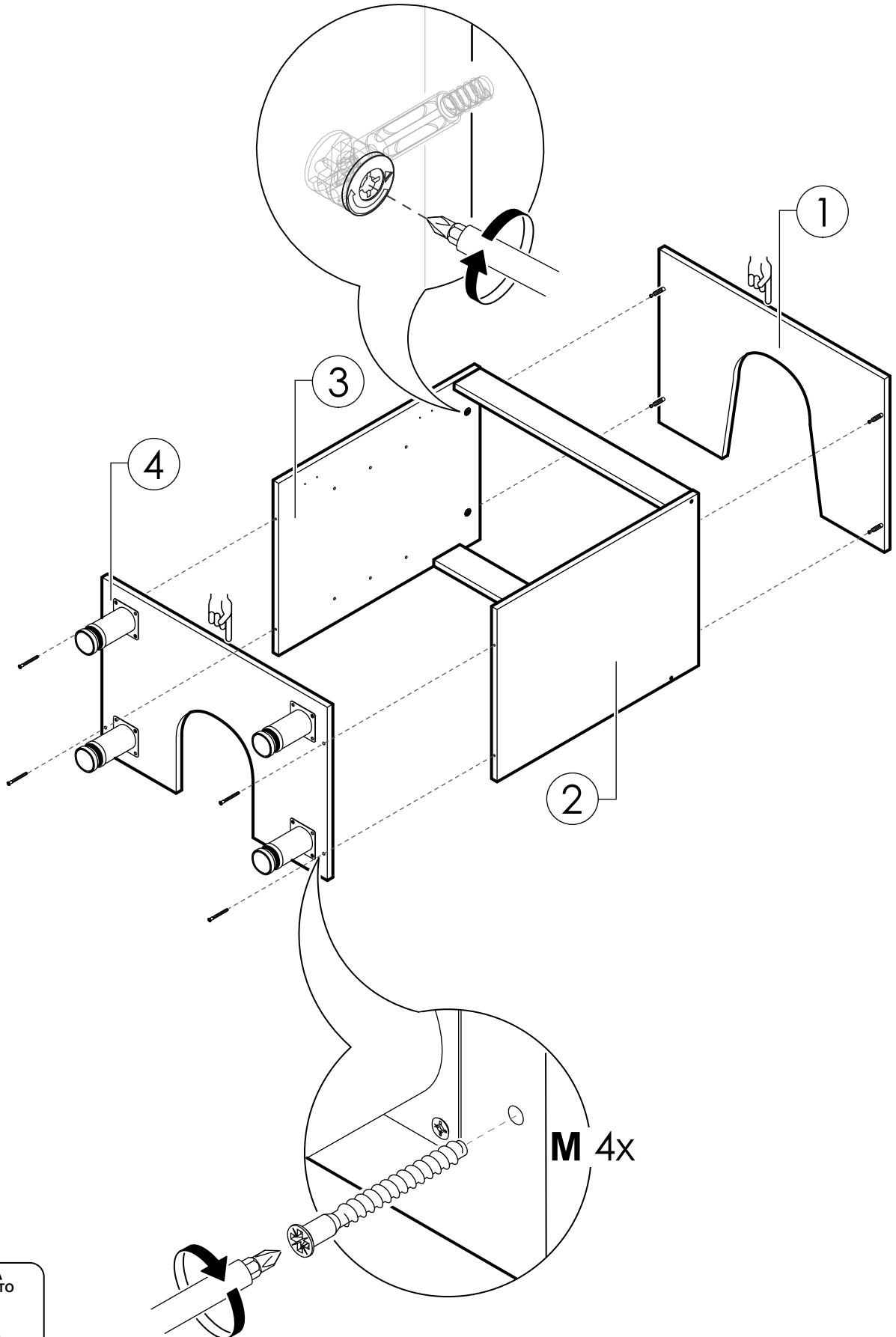


# 1

## SECUENCIA DE ARMADO

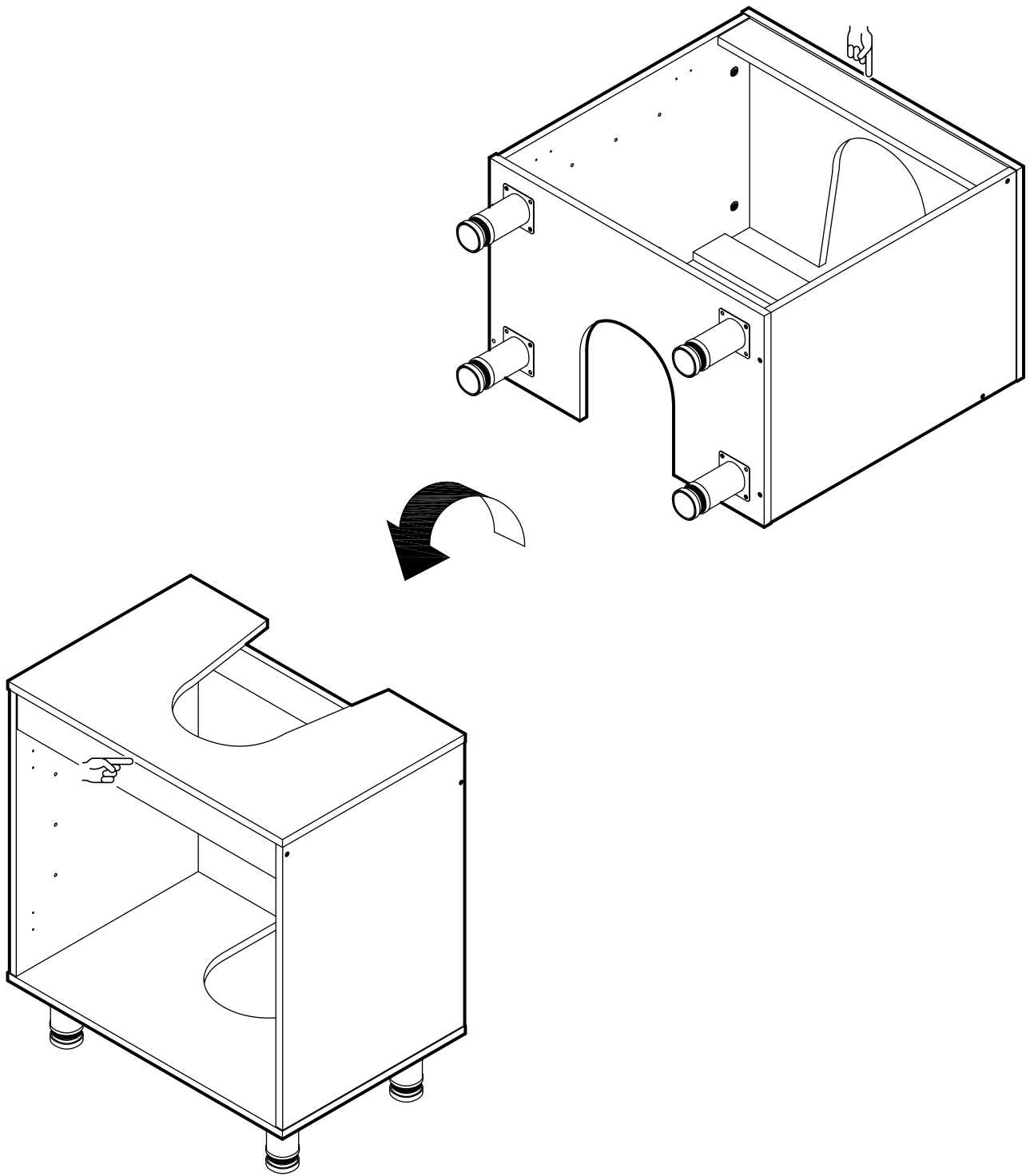


# 2

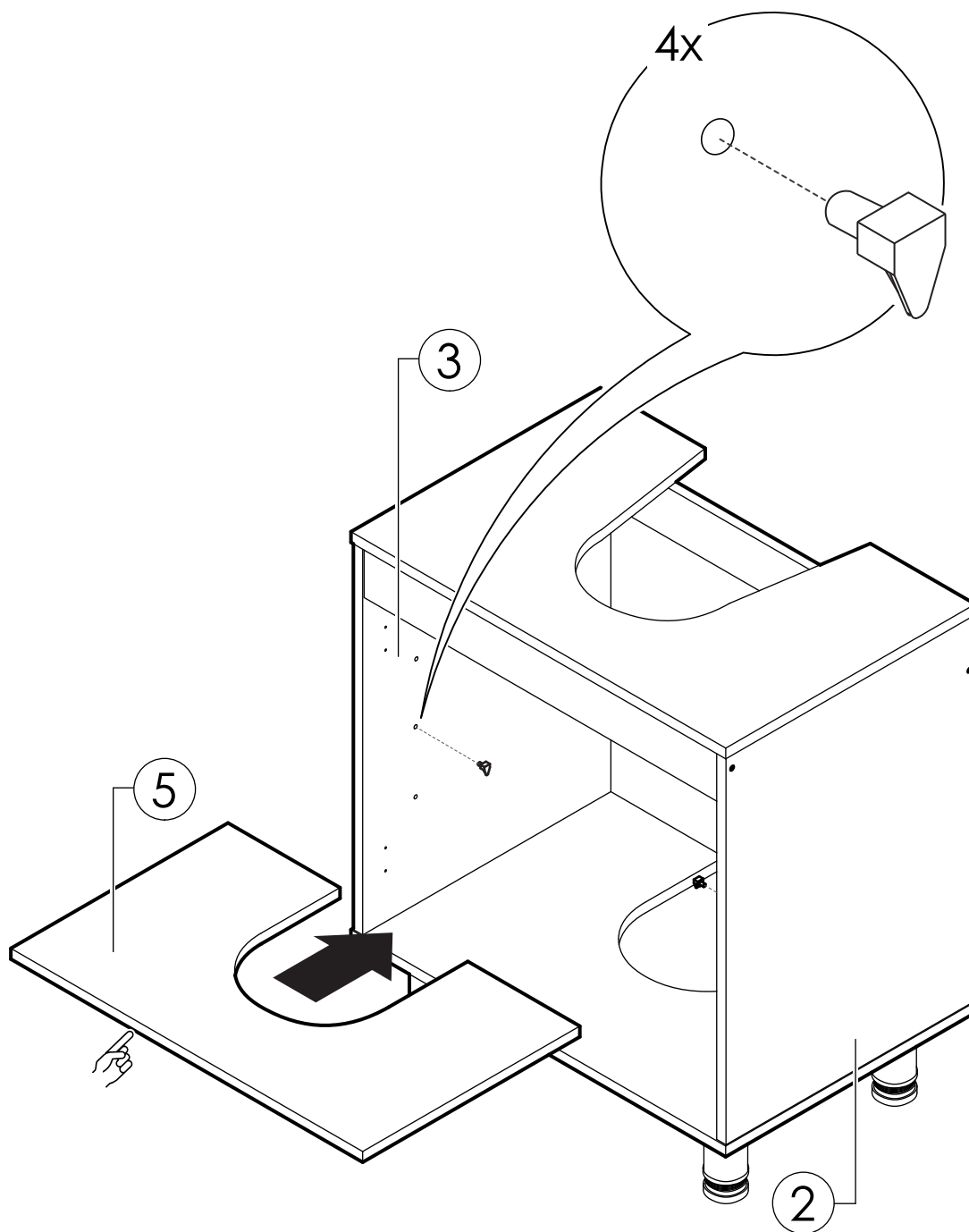




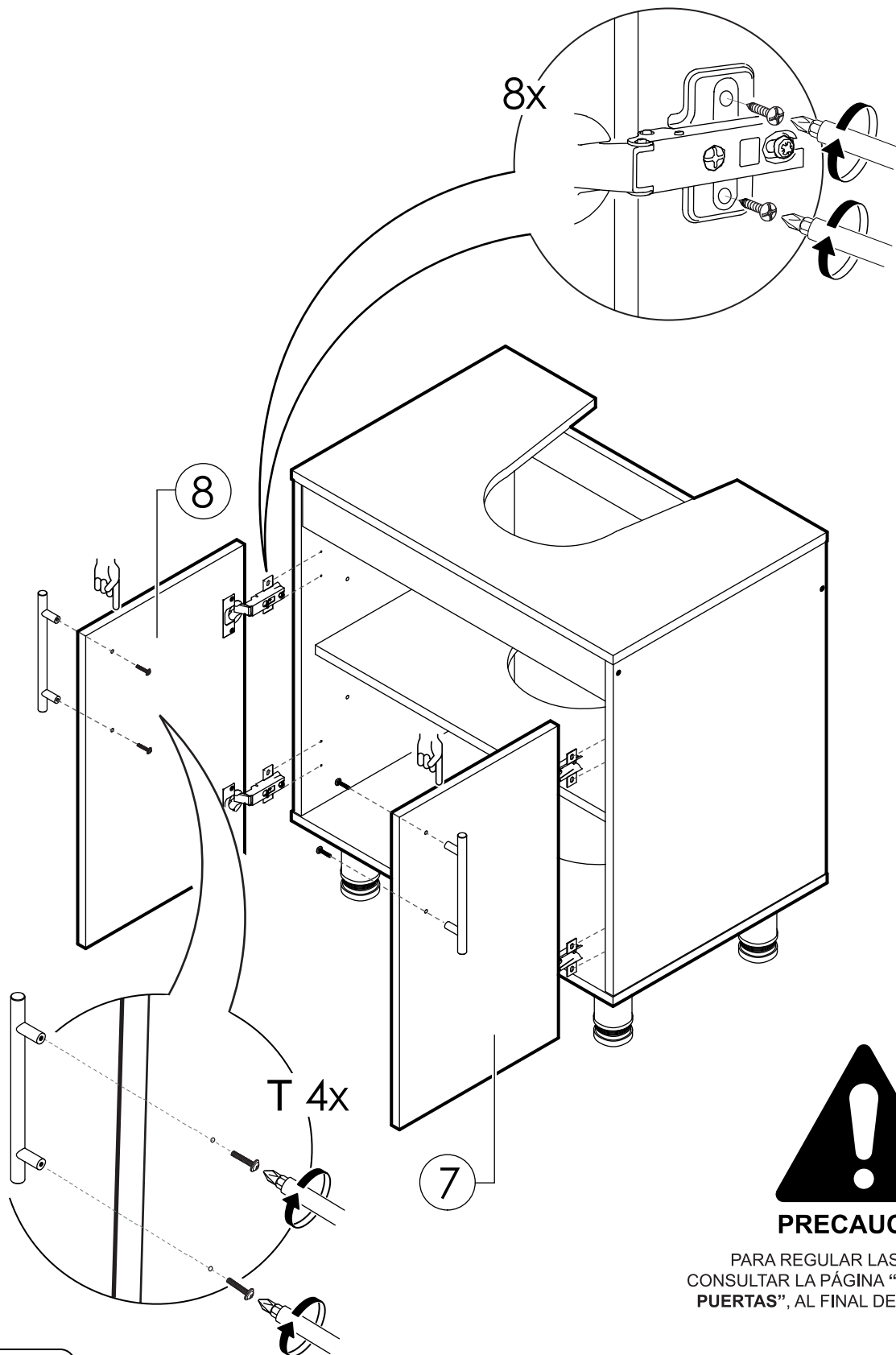
# 3



# 4



# 5

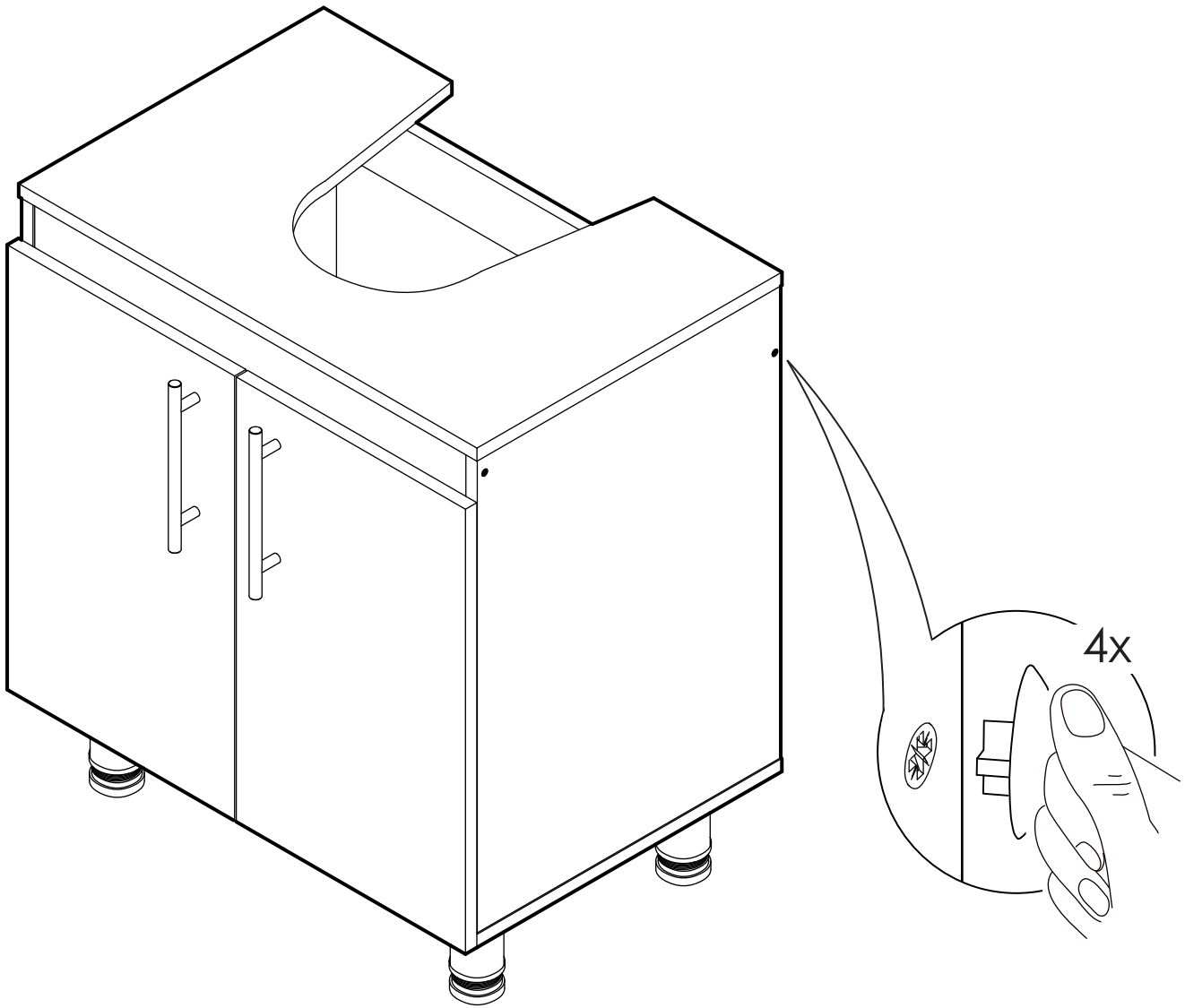


**PRECAUCIÓN**

PARA REGULAR LAS BISAGRAS,  
CONSULTAR LA PÁGINA "REGULACIÓN DE  
PUERTAS", AL FINAL DEL INSTRUCTIVO.

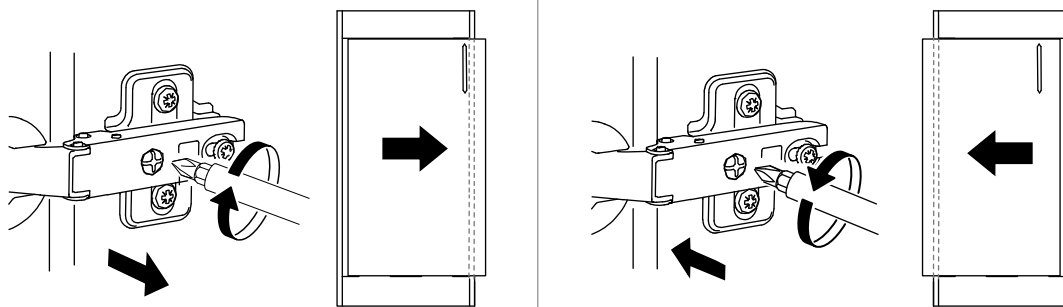


# 6

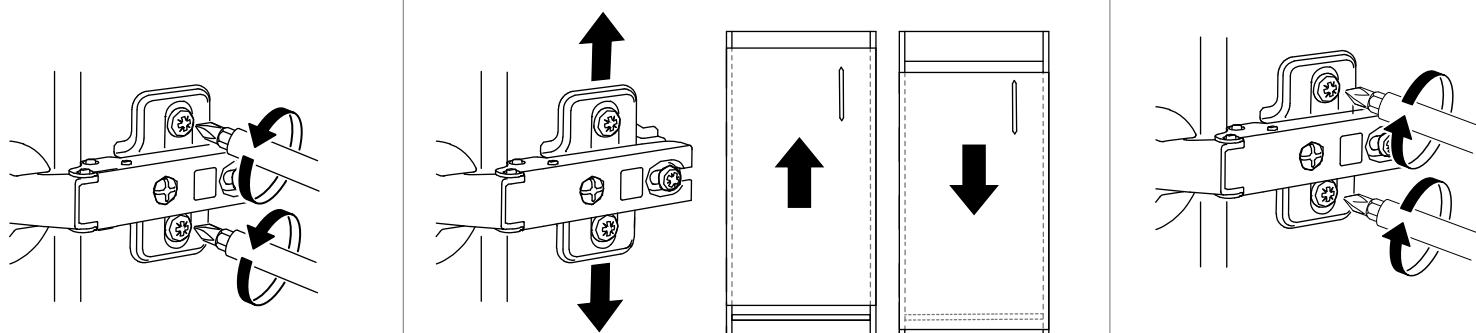


# REGULACIÓN DE PUERTAS

## REGULACIÓN HORIZONTAL



## REGULACIÓN VERTICAL

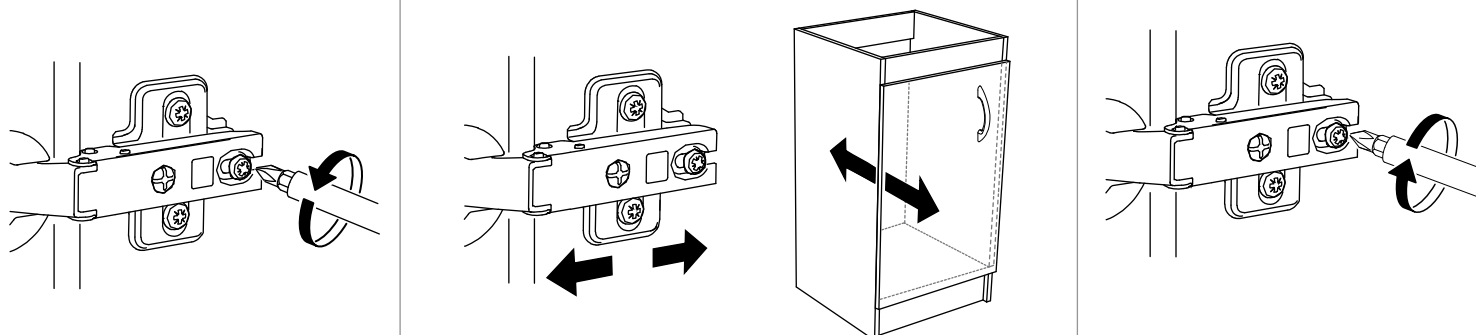


**Suelte** ambos tornillos de la bisagra

**Regule** la altura de la puerta

**Apriete** ambos tornillos de la bisagra

## REGULACIÓN DE PROFUNDIDAD



**Suelte** el tornillo

**Regule** la profundidad de la puerta

**Apriete** el tornillo

